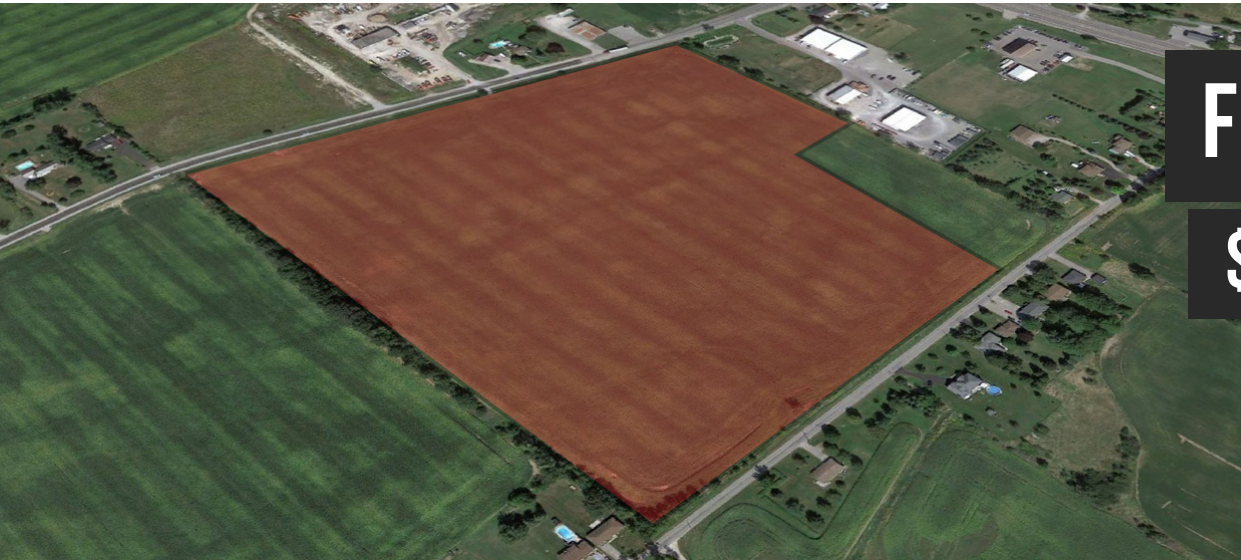


71-155 SUNNINGDALE DRIVE

MLS® NUMBER: X6337330

BELLEVILLE



FOR SALE

\$4,900,000

**36
ACRES**

Prime Residential Development Land in Belleville!

FEATURES

- 4 minutes away from the 401!
- Located near amenities including grocery stores, local shopping, restaurants, and more! As well as, Plenty of Schools in the area, including elementary, secondary and post-secondary (Loyalist College).
- Concept Drawings and Planning for Units allowing: low density = 364 units, medium density = 874 units, and high density = 1,676 units.
- Approx. 1,000 ft of lot frontage.
- Located within the north end of Belleville – one of Eastern Ontario's fastest growing cities.

The city of Belleville is currently considering expansion of the official plan due to the rapid growth and overwhelming demand for new homes in the region.



CALL NOW
(613) 969-9901

Jamie Troke
Broker of Record
jamie@ekortrealty.com

